

**You will need:**

- 1 Copy of pages 2 & 3 printed out
- Scissors
- Glue stick

**Optional:**

- Watch the Zoo EDventures video that discusses the difference between turtles and tortoises.



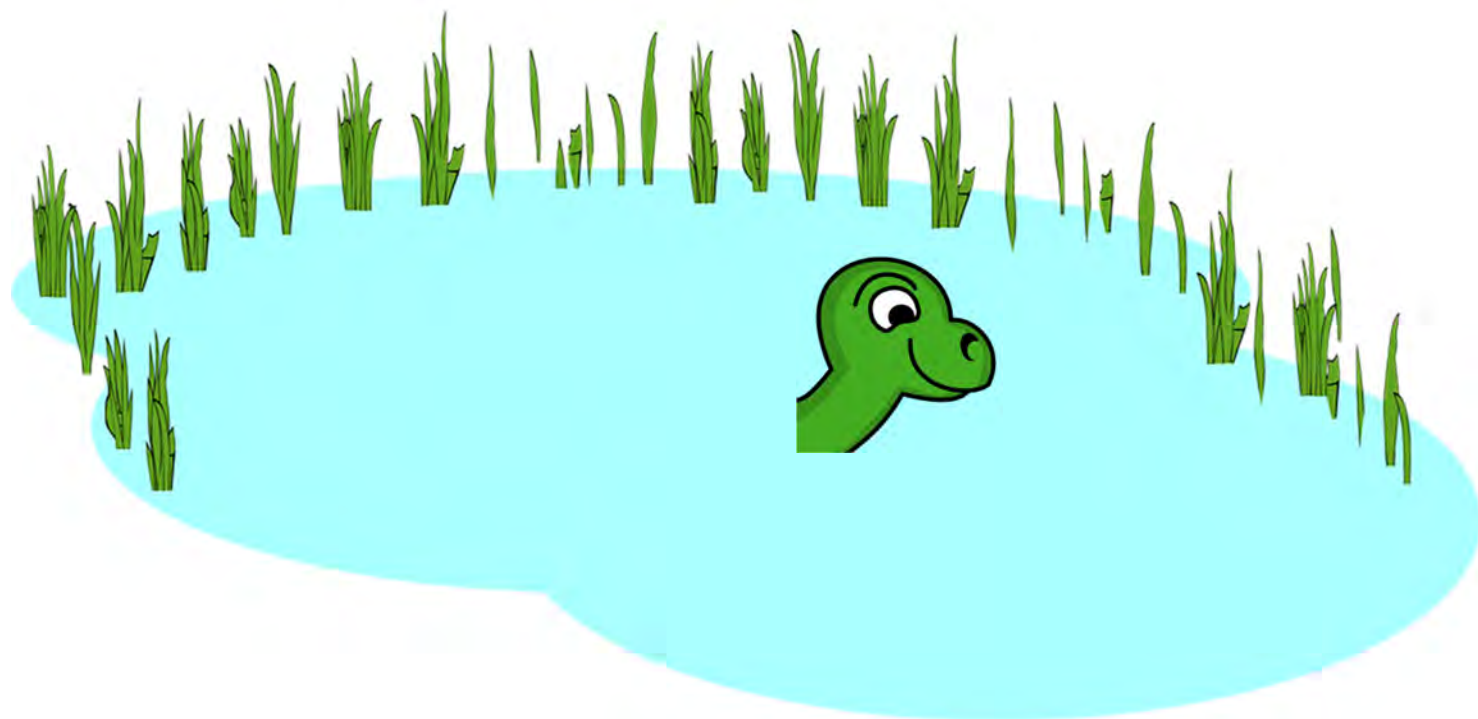
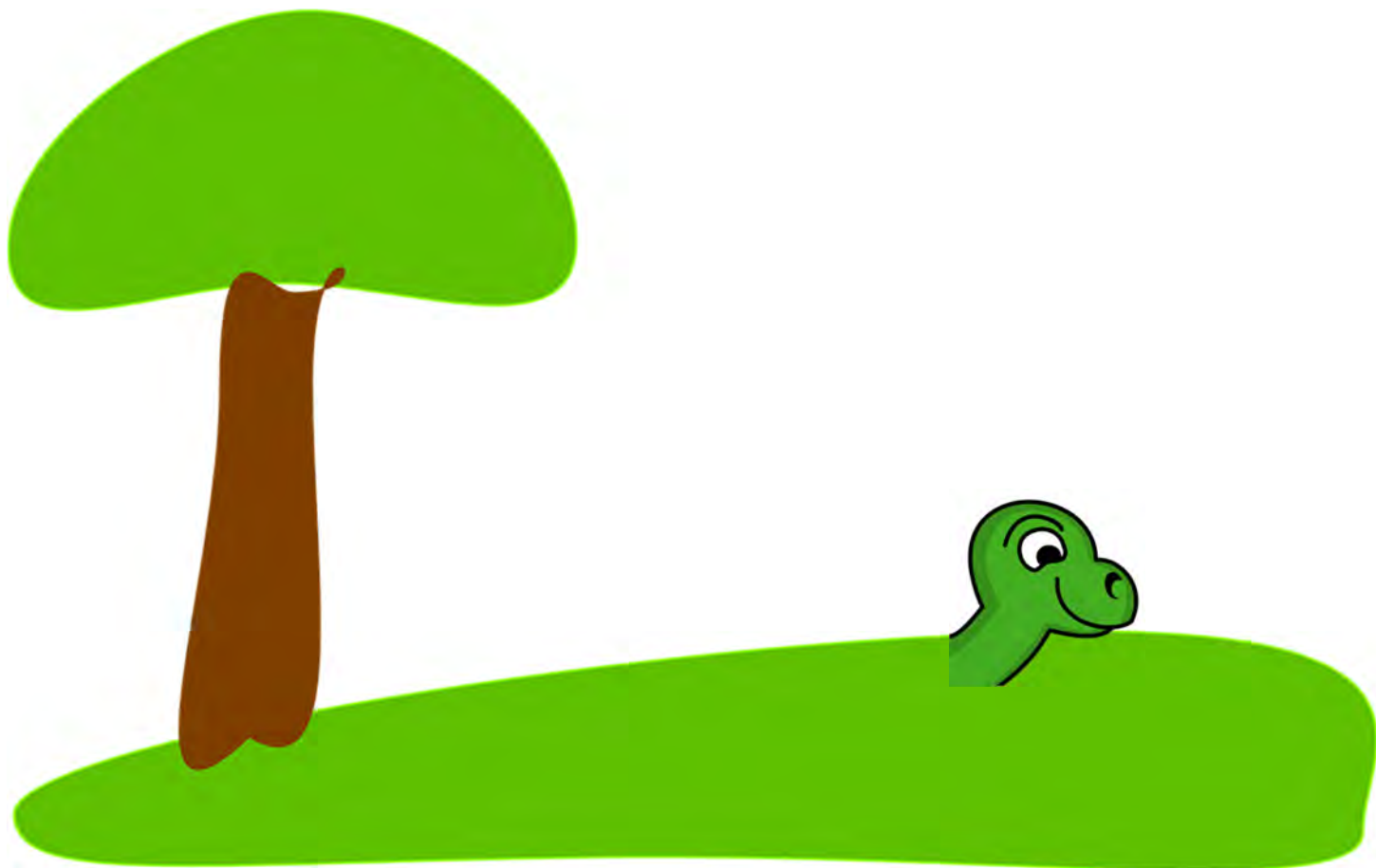
**Directions:**

1. Print out pages 2 and 3 (do not print double sided)
2. Cut out each of the traits and determine which one goes with each animal through the following questions.
  - One animal lives on land and the other lives in the water, which one is the tortoise and which is the turtle?
  - One has a round dome like shell while the other has a more flat, streamline shell, which is which?
  - What does the turtle eat? What does the tortoise eat?
  - One has strong straight legs and the other has webbed feet or fins. Which feet belong to who?
3. Add each trait to the turtle and tortoise. Then glue it down in the correct habitat.

Congrats! You now know the differences between tortoises and turtles.



Directions: Add the tortoise's and turtle's matching shell, food, and feet.





Shell—Dome shaped ←



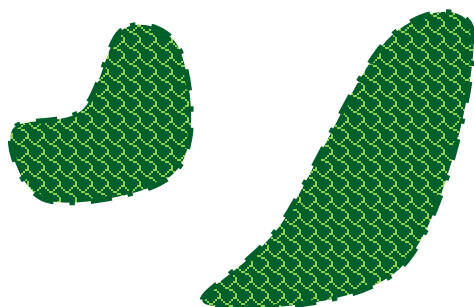
Shell—Flat →



Omnivore—Eats plants and meat ←



Herbivore—Eats plants →



Feet—Webbed or fins ←



Feet—Straight and thick →

## Answer key:

1. Tortoises are land dwellers while turtles live in or near the water
2. Tortoises, who spend more time on land, have a large dome shaped shell. Turtles who spend a large amount of time in the water, have a streamline shaped shell that's more flat than a tortoise's.
3. Tortoises are herbivores which means they eat plants. Turtles are omnivores which means they eat both plants and animals.
4. The feet of a tortoise are strong and straight, helping them walk around on the ground better. The webbed feet or fins of a turtle help them swim in the water.

This is what the it should look like at the end —>

