

North America

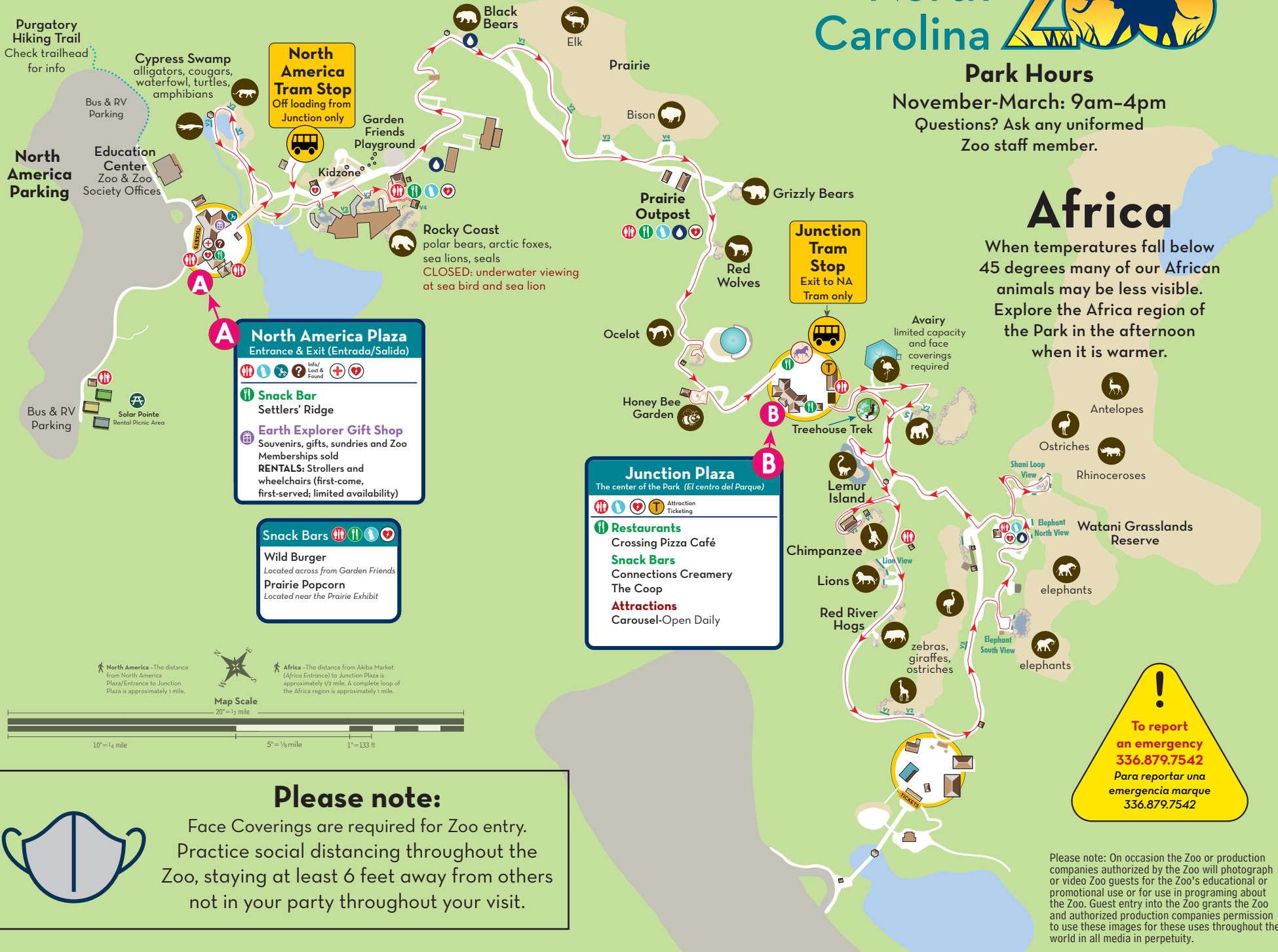


Park Hours

November-March: 9am-4pm
 Questions? Ask any uniformed
 Zoo staff member.

Africa

When temperatures fall below
 45 degrees many of our African
 animals may be less visible.
 Explore the Africa region of
 the Park in the afternoon
 when it is warmer.



North America Plaza
 Entrance & Exit (Entrada/Salida)

Info/Lost & Found

Snack Bar
 Settlers' Ridge

Earth Explorer Gift Shop
 Souvenirs, gifts, sundries and Zoo Memberships sold
RENTALS: Strollers and wheelchairs (first-come, first-served; limited availability)

Snack Bars

Wild Burger
 Located across from Garden Friends

Prairie Popcorn
 Located near the Prairie Exhibit

Junction Plaza
 The center of the Park. (El centro del Parque)

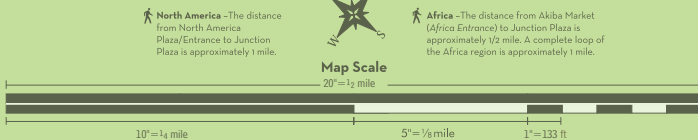
Attraction Ticketing

Restaurants
 Crossing Pizza Café

Snack Bars
 Connections Creamery
 The Coop

Attractions
 Carousel-Open Daily

To report an emergency
336.879.7542
 Para reportar una emergencia marque
336.879.7542



Please note:



Face Coverings are required for Zoo entry.
 Practice social distancing throughout the Zoo, staying at least 6 feet away from others not in your party throughout your visit.

Please note: On occasion the Zoo or production companies authorized by the Zoo will photograph or video Zoo guests for the Zoo's educational or promotional use or for use in programming about the Zoo. Guest entry into the Zoo grants the Zoo and authorized production companies permission to use these images for these uses throughout the world in all media in perpetuity.

KNOW BEFORE YOU GO

We look forward to welcoming our members and guests back to the world's largest natural habitat zoo. We have made some changes to our operations to help ensure your safety during this time. We ask that you read the below information to help you plan your visit.

Admissions and Ticketing:

- Please print your reservation confirmation or tickets for the most efficient entry. Tickets can also be scanned from your smart phone. North Carolina Zoo Society members please have your valid membership card and a photo I.D. along with the reservation confirmation for entry. If you made reservations to use your previously purchased Zoo admission tickets you must present those tickets along with your reservation for zoo entry.
- During this period, we will not have walk-up ticket sales. Please ensure that everyone in your group has a pre-purchased timed entry ticket or reservation, including those under two years of age.
- Only the North America entrance and parking lot will be open for entry and exit. You can see the entire Zoo from this entrance.
- To keep crowd size at the gate to a minimum we ask that you please do not arrive before your reserved entry time. We are unable to accommodate early entries. Entry times have a 30 minute window (Example: 9:30 am ticket entry is 9:30am - 10am)

- **Face Coverings** are required for Zoo Entry (Unless Exception Applies). *Exceptions under the Governor's Executive Order #163 include:*
 - Children Under 5
 - Medical or behavioral condition or disability
 - If actively drinking or eating
 - Strenuously exercising
 - Communicating with someone hearing impaired

Individuals must maintain 6' distance with guests outside of your group if you are not wearing a face covering.

- Face Coverings (covering the mouth and nose) are required in the following areas where six feet distance from others may not be possible:
 - Entering the Zoo at admissions
 - Plaza Areas (unless actively eating or drinking)
 - Waiting in line for, riding & exiting the Zoo's trams
 - Restrooms
 - Animal Viewing Areas
 - Gift Shop
 - All playgrounds and play areas
 - Inside any building on Zoo property

Face coverings may be removed within the Zoo while outdoors on pathways and you are able to maintain 6' distance from any individual not in your group.

- Please bring what you need when you enter as there is no re-entry. Picnic areas are outside the main gate so if you plan to picnic, do so either before your visit to the Zoo or after your visit to the Zoo at our Solar Pointe picnic area (adjacent to the North America Parking Lot).
- The Zoo's pathways are configured into a one-way walking experience through North America and Africa wherever possible. This is to help encourage social distancing while still ensuring every guest can stop by each habitat. You will see directional signs and decals to help you navigate your visit.

Park Updates:

The following habitats and amenities are unavailable at this time.

- **Indoor habitats**
Streamside, Desert, Seabird and Sea Lion Underwater Viewing
- **Indoor dining** (outside dining is available)
- **Seasonal attractions** Includes: Giraffe Deck, VR Experience, Zoofari, Air Hike Ropes Course & Kaleidoscope Butterfly Garden
- Education Smart Carts
- Keeper talks and animal feeding times
- Tram service in Africa

Dining and Gifts

- **Pre-packaged food options** and outdoor seating will be available inside the Zoo. We encourage the use of credit, debit or gift cards for purchases.
- Earth Explorer gift shop at North America Plaza will be open with limited guest entry.

Creature Comforts

- **Restrooms** are available throughout the Zoo, but for your safety, will close periodically for cleaning and sanitizing.
- **Hand sanitizer stations** are set up in designated areas along the paths for your convenience.

Water bottle refill stations available.

As a further safety measure, *all drinking fountains are closed through the Zoo*, but water bottle refill stations are available at **Wild Burger Cafe** (North America), near the **Black Bear habitat** (North America), **Prairie Outpost** (North America) and near the **Watani Grassland restrooms** (Africa). **We encourage guests to bring a refillable water bottle.**

Getting Around the Zoo

We are a walking Zoo and our animals are only visible from the walking paths. If you need assistance returning to the North America exit, transportation will be available (with limited capacity) at Junction Plaza. There is no tram service from Africa or parking lot shuttles at this time.

Only folded strollers that can fit into the seat with you can be accommodated on Zoo transportation at this time.

- If you wish to bring your oversized stroller or wagon you are welcome to but remember, this means you will be walking back as transport cannot accommodate them during this time.
- If you rent a Zoo stroller these can be left at the Junction tram stop at the end of your visit should you choose to take a tram back.

The Zoo is an agency of the NC Dept. of Natural & Cultural Resources, Roy Cooper, Governor. 3,000 copies of this public document were printed at a cost of \$1,293.15 or \$0.43 each. Rev. November 2020